

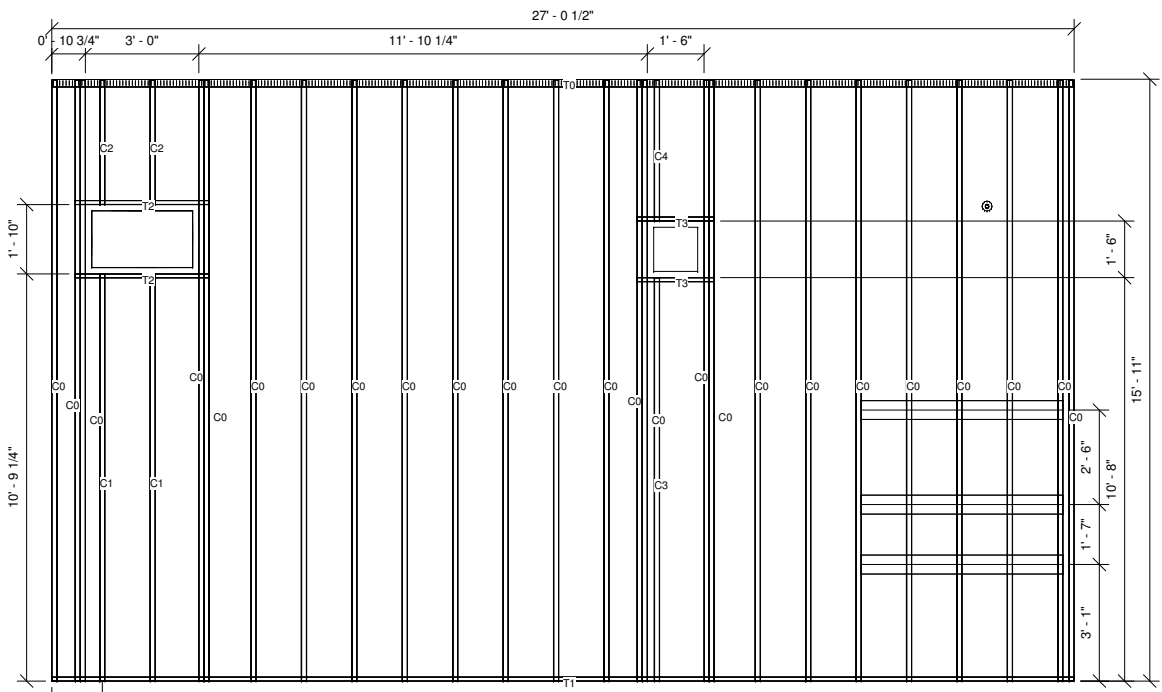


ClarkDietrich Office Location:
 28 Marshall Court East, Suite 300
 Bismark, CA 94710
 (530) 938-0400 (Fax)
 2000 South Main Street, Suite 300
 Colton, CA 95310
 780 Jones P. Casey Road
 Bismark, CA 94710
 2000 International Blvd. Suite 100
 Colton, CA 95308
 6400 Hwy 477, Box 2000
 Bismark, CA 94710

ClarkDietrich Building Systems
 Jennie Sealy Replacement Hospital
 Project Location:
 Galveston, TX

Revisions

Sheet:
 CP WS WS
 Date: 6/21/13
 Project Number: 200612125-0
 Sheet Title:
 *Framing
 Sheet No.:
 Panel128
 06/20/13 09:58 AM



② Elevation Framing
 3/8" = 1'-0"

① Mwf_Panel128-FloorView-Framing
 3/8" = 1'-0"

Lbl	Qty	Member	Length
	3	FB0.125x6	5' - 4"
C0	25	362S162-43	15' - 10 5/8"
C1	2	362S162-43	10' - 9 1/8"
C2	2	362S162-43	3' - 3 3/8"
C3	1	362S162-43	10' - 8"
C4	1	362S162-43	3' - 8 5/8"
T0	1	362SLT250-43	27' - 0 3/8"
T1	1	362T125-43	27' - 0 3/8"
T2	2	362T125-43	3' - 6 1/2"
T3	2	362T125-43	2' - 0 1/2"

③ Bill of Material
 1/2" = 1'-0"

Jennie Sealy Replacement Hospital

Galveston, TX