

METAL LATH & ACCESSORIES FOR STUCCO & STONE



**STRONGER
THAN STEEL.SM**

METAL LATH • WEEP AND SILL SCREEDS • VINYL ACCESSORIES
CORNER AND CASING BEADS • CONTROL AND EXPANSION JOINTS



THE INDUSTRY'S MOST
COMPLETE
PRODUCT LINEUP.
AIMED AT CHANGING THE
BUILDING LANDSCAPE.

Need help with product selection, ordering, scheduling, or delivery?
Call us at 800-543-7140, or on the West Coast 800-365-5284.

For up to date Product Submittals, use SubmittalPro® at clarkdietrich.com.

Table of Contents

Metal Lath	4-7
Welded Wire Lath	8-10
Corner and Casing Beads	11-13
Control and Expansion Joints	14-16
Weep and Sill Screeds	17-18
Overview and General Notes	19
Application Standards	20
Trademarks and Warranty	21
Easy Embedment System™	22
Code Approvals	23



Metal lath and accessories for stucco and stone.

ClarkDietrich offers a wide variety of lath and accessories for the stucco and stone industry. Our comprehensive product line includes lath products, as well as steel, zinc and vinyl accessory products to fit any application you may have. We know that having the right products, at the right time, and at the right price is absolutely essential to getting the job done right.

The list of our lathing products goes on, but there is much more to us than that. We refer to ourselves as ClarkDietrich for a reason. When you specify or choose our product line, you get fully tested, precision formed products every time. We offer unmatched service through numerous plants with nationwide product availability.

Regardless of your projects size or complexity, ClarkDietrich has the resources to help you achieve your vision. And this comprehensive lath and accessories catalog is a great start. Our product line is as strong as the company that stands behind it. You can count on the expertise, service and full support of ClarkDietrich now, and far into the future.

METAL LATH AND ACCESSORIES

Durable beauty starts beneath the surface.

Whether using conventional plaster or thin stone, having the right lath, trims, control joints and corner reinforcements is an integral part of the wall system's appearance and long-term performance. ClarkDietrich's history in the manufacturing of metal lath and accessories gives us unique knowledge of this trade and the product quality it requires.

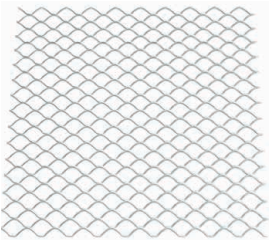
Metal lath and accessories create a strong mechanical bond with plaster, stucco and stone, providing superior strength and reinforcement. Expanded mesh and rigid pronounced edges provide excellent keying and exacting grounds for superior bonding and finishing to minimize cracks and shadowing. Products can be readily shaped to enable ornamental contours not possible with other materials.

Applications for lathing include interior and exterior walls and ceilings, tile reinforced underlayment and spray-applied fireproofing for both commercial and residential construction.

Features:

- Flat, self-furred and paper-backed diamond mesh, as well as high-rib laths. Structa Wire distributed in the Eastern U.S.
- Some Diamond Mesh Laths available in G-90 coating and stainless steel
- Wide selection of beads, screeds, joints and trim, in metal zinc and vinyl
- Fire resistance designs up to four hours for partitions, ceilings and columns
- Strength, flexibility, and impact resistance

DIAMOND MESH FLAT LATH (F)



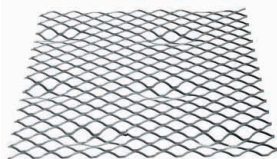
ClarkDietrich diamond mesh lath is used as a substrate for Portland cement or gypsum plaster on either interior or exterior walls, ceilings, soffit and fascia surfaces, and can be used under ceramic tile in wall, ceiling and floor applications. It's useful in all general-purpose applications and is the best lath available for ornamental work and contoured surfaces, as well a spray-applied fireproofing.

Product code	Weight (lbs/yard ²)	Size		Pcs./Bundle	Bundle/Skid
		Width (in)	Length (in)		
LAM	1.75	27	97	10	25
	* 2.5*				
	* 3.4*				

*2.5# and 3.4# available in G90 coating. Special order and lead time.

Manufactured to ASTM C847.

SELF-FURRED DIMPLED LATH (SFD)



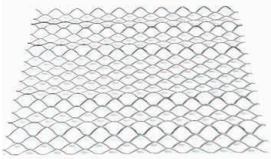
ClarkDietrich self-furring dimpled lath is manufactured with approximately 1/4" deep dimples that raise diamond mesh away from solid surfaces to enable thorough plaster or stucco penetration into and behind the lath for superior mechanical bonding. The dimples are spaced over the rectangular sheet. This lath is ideal for manufactured stone installations, per ASTM C1780 or typical plaster per ASTM C1063.

Product code	Weight (lbs/yard ²)	Size		Pcs./Bundle	Bundle/Skid
		Width (in)	Length (in)		
LAD	1.75	27	97	10	25
	* 2.5				
	* 3.4				

*2.5# and 3.4# available in G90 coating. Special order and lead time.

Manufactured to ASTM C847.

SELF-FURRED V-GROOVE LATH (SFV)

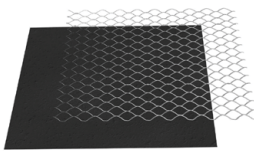


Self-furring v-groove mesh lath is manufactured with five, approximately 1/4" deep embossed "V" ribs, spaced 6" o.c. along the length of the sheet. The Vs allow thorough penetration into and behind the lath for superior mechanical bonding. Fasteners installed into the v-groove to assure adequate spacing, per ASTM C1063.

Product code	Weight (lbs/yard ²)	Size		Pcs./Bundle	Bundle/Skid
		Width (in)	Length (in)		
LAV	1.75	27	97	10	25
	* 2.5				
	* 3.4				

*2.5# and 3.4# available in G90 coating. Special order and lead time. Manufactured to ASTM C847.

PAPER-BACKED LATH



Application of asphalt paper-backed (APB) metal lath is used behind stone, traditional stucco, and tile installations as a code compliant weather resistant barrier. Paper is offset (min) 2" on one long edge and end to ensure proper lath-to-lath laps and a minimum 1" paper overhang on the opposing short side. See page 20 for installation information.

Product code	Description	Wt. per Sq. Yard	Sheet Size	Sheets/Bundle	Bundle/Pallet
LAM (O)	Paper-Backed Diamond Mesh Lath	2.5 lbs.	27" x 97"	10	25
		3.4 lbs.			
LAD (O)	Paper-Backed Dimple SF Lath	2.5 lbs.	27" x 97"	10	25
		3.4 lbs.			
LAV (O)	Paper-Backed V-Groove SF Lath	2.5 lbs.	27" x 97"	10	25
		3.4 lbs.			

*2.5# and 3.4# available in G90 coating. Special order and lead time.

Manufactured to ASTM C847.

E-SCREEN (DRAINAGE MAT)



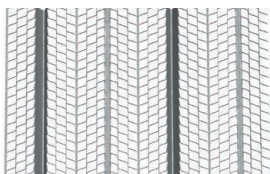
ClarkDietrich E-Screen can be used in stucco, stone veneer, brick, or under various siding installations to provide an effective method for drainage and ventilation in the wall system. The Rainscreen functions like 1 of the 2 layers required on wood-based sheathing. Produced in 6mm and 10mm mat thicknesses and packaged in 18 rolls/pallet.

	E-Screen 6mm	E-Screen 10mm
Core Material:	Polypropylene (Cornrow)	Polypropylene (Cornrow)
Thickness:	.25 in (6mm)	.40 in (10mm)
Roll Length:	61.5 ft (18.75m)	40 ft (12.19m)
Roll Width:	39 in (99.06cm)	39 in (99.06cm)
Roll Height:	14 lbs (6.35kg)	16 lbs (7.26kg)
Coverage Area:	200 sq. ft. (18.58m ²)	130 sq. ft. (12.08m ²)

*Packaged in 18 roll pallets – sold and shipped by the pallet only.

Complies with ASTM E2925 -Standard Specification for Manufactured Polymeric Drainage and Ventilation Materials Used to Provide a Rainscreen Function.

3/8" HIGH RIB LATH (HI-RIB)



ClarkDietrich 3/8" high rib lath is the most rigid of all laths and provides the added support required when framing is more than 16" o.c. but does not exceed 24" o.c. Commonly used for soffits and ceilings under steel or wood joist construction. 3/8" V-shaped ribs run the length of the sheet at 3-7/8" intervals.

Product code	Weight (lbs/yard ²)	Size		Pcs./Bundle	Bundle/Skid
		Width (in)	Length (in)		
LAR	3.4	27	97	10	50

*Raw Material complies to ASTM C847 with a G60 coating.

SPRAY RIB LATH (SPRAY)



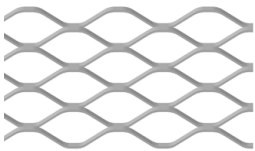
Spray rib lath is the same 3/8" rib lath except it's made with strips of 50 lb. brown kraft paper backing (between ribs), to help prevent loss of plaster over open framing or when spray-applied via the use of the plaster pump.

Product code	Weight (lbs/yard ²)	Size		Pcs./Bundle	Bundles/Skid
		Width (in)	Length (in)		
LARS	3.4	27	97	10	25,50

NOTE: Available West Coast only.

*Raw Material complies to ASTM C847 with a G60 coating.

STAINLESS STEEL LATH



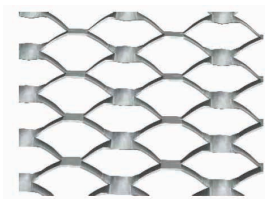
Both 2.5# & 3.4# SS304 laths are produced to the same ASTM C847 specifications in dimensions and weight in stainless steel 304 alloy. If this type lath is chosen & installed, be mindful of dissimilar metals and the electrolysis effect stainless can cause when in contact with galvanized, or other metals.

Flat Style			
Product code	Dimensions	Wt./Sq. Yd.	Alloy type
SS205-FLAT	27" x 97"	2.5 lbs	SS304 stainless
SS304-FLAT	27" x 97"	3.4 lbs	SS304 stainless

V-Groove Style*			
Product code	Dimensions	Wt./Sq. Yd.	Alloy type
SS205-V	27" x 97"	2.5 lbs	SS304 stainless
SS304-V	27" x 97"	3.4 lbs	SS304 stainless

NOTE: V-Grooves are 1/4" deep, spaced 6" o.c. down 97" length of sheet.

SECURITY LATH

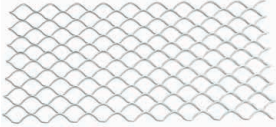


This heavy gauge lath provides enhanced protection from breach of the surface, whether ceilings or walls. Typically used for hard-coat stucco, the applications include jails, detention centers, correctional facilities, homeland security, etc. Because of the Security Lath strength and stiffness, ClarkDietrich recommends the ceiling "float", not mechanically fastened to structural framing. In all cases, consult with a qualified Professional Engineer for design criteria.

Product code	Size			Wt./Sq. Ft.
	Gauge	Sheet size	Diamond width	
CDBS-SL	16 ga	27" x 97"	Approx. 0.5"	0.85

NOTE: Sold by the sheet. Contact ClarkDietrich about pricing and availability.

STRIP LATH FOR PLASTER REINFORCEMENT



Strip Lath is a flat, closed diamond, expanded metal strip used as plaster reinforcement over joints or dissimilar substrates. It's commonly attached diagonally at the corners of doors, windows or areas prone to cracks. For spray-fireproofing systems, strip lath provides pre-cut widths easy-to-install mechanical breaks on painted steel.

Product code	Size		Pcs./Carton
	Width (in)	Length (ft)	
LAST	4	8	75
	6		

Per ASTM C1063, C847

Achieves the mechanical break described in UL Fire Resistance Directory for Spray Fireproofing Requirements.

Cornerite™ METAL LATH ANGLE



Cornerite™ metal lath angle is used to reinforce all inside lath corners to reduce corner cracking. Formed from finished edge strip lath, it's bent lengthwise to a 100° angle to ensure a snug fit into 90° corners. It's commonly used when walls meet walls or ceilings, over inner angles of masonry construction. Cornerite is produced to ASTM C1063 standards.

Product code	Size		Pcs./Carton
	Width (in)	Length (ft)	
XRIT	2 x 2	4	75
	2 x 2	8	
	3 x 3	8	

Per ASTM C1063

WELDED WIRE LATH

by STRUCTA WIRE CORP.

Welded Wire Stucco Reinforcing Products for 3 Coat & 1 Coat Stucco and Thin Stone

From the inside out, we make stucco and stone beautiful. We provide engineered, tested and approved solutions for stucco walls, ceilings and corners. Our products employ the patented use of cold-rolled or flat wires to increase strength and structural performance.

We give design consideration to every detail to ensure worker friendliness & construction site efficiency. Technical and engineering support provided. Meets ASTM C933 Specification for Welded Wire Lath and IAPMO ER 2017 in compliance with the 2018 International Building Code (IBC).

TWIN TRAC

Designed for residential or commercial construction, Twin Trac has eight secondary cold-rolled longitudinal wires that add strength to form a 'track' for convenient attachment. Twin Trac can be substituted wherever 2.5# metal lath has been specified.

Product code	Style	Equal to/Used for	Width (roll)	Length / Sq. Footage	Weight (roll)
Twin Trac *1.14 lb/sq ² yd.	No. 17 wire, 1-1/2" x 1-1/2"	2.5# dia. / Steel Stud/Sheathing	38-3/8"	150 ft / 470 sq. ft	60 lbs
		2.5# dia. / Wood Framing/Sheathing			

NOTE: Twin Trac sold 32 rolls/pallet.

*Complies to ASTM C933 Welded Wire Lath

INNOVATIVE DESIGN

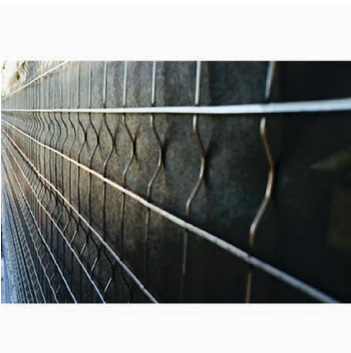
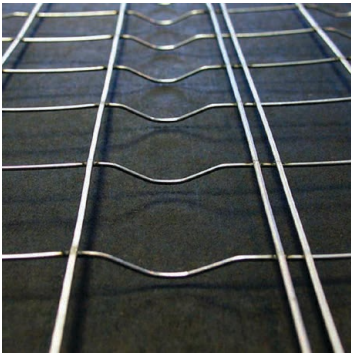
- It is designed to provide easy attachment for both steel and wood-stud construction
- The innovative use of longitudinal wires create a series of (8) twin wire spacing bands that act as a continuous washer. This design allows for the easy penetration of self-tapping screws, hand nails and a flat base for automatic staples, making application easier and faster
- Twin Trac provides a minimum of 28 rugged furring points per square foot that create both uniform embedment and crack resistance

ECONOMICAL

- Twin Trac in rolls (compared with diamond mesh sheet) provides the most economical and cost-effective metal base for three-coat stucco commercial and residential construction projects
- It saves material at side and end laps, compared with metal lath sheets. The reduction of overlaps means fewer weak points, and therefore less shrinkage cracks.
- Scratch-coat covers wire thoroughly

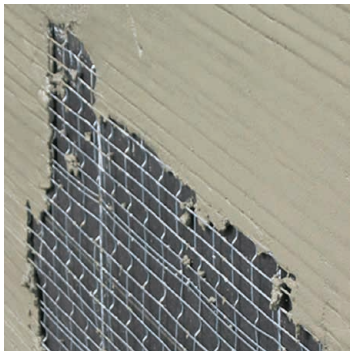
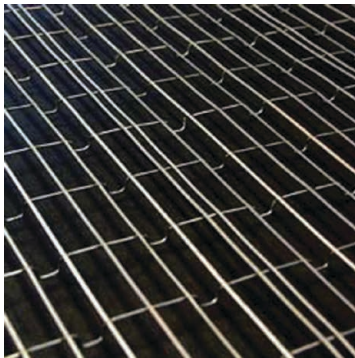
CONVENIENT

- Worker-friendly Twin Trac unwinds from the roll into the flat plane without "spring back", making application easier
- Twin Trac provides convenient and simple installation
- Twin Trac is designed to minimize build-up at horizontal laps
- The product is easy to manage on a scaffold, reducing worker fatigue and increasing productivity and job satisfaction
- Can be rolled out the length of the wall and walked up ladders like wallpaper



MEGA LATH

Mega Lath is an engineered product that provides easy attachment for both wood and steel construction. Specifically designed for stucco or stone applications that require extra reinforcing, Mega Lath can be used as an alternative to 3.4 lb/yd² diamond mesh metal lath specified in ASTM C847. Mega Lath can be installed 24" o.c. over open framing and is the only lath product code approved for vertical applications over horizontal Z-Furring on Continuous Insulation (CI) systems.



Product code	Style	Equal to/Used for	Width (roll)	Length / Sq. Footage	Weight (roll)
Mega Lath *1.95 lb/sq ² yd.	No. 17 wire, 3/4" x 1-1/2"	3.4# dia. / Studs & Open Frame 3.4# dia. / Metal Framing / Sheathing	30"	108 ft / 270 sq. ft	60 lbs

NOTE: Mega Lath sold 48 rolls/pallet.

*Complies to ASTM C933 Welded Wire Lath

NEW INNOVATIVE PRODUCT

Mega Lath is made with less metal but has more strength than any other product available – including sheet lath products. It is engineered to meet weight requirements for 3-coat stucco and manufactured stone product installations. Also available in stainless steel 304 alloy.

DESIGN FEATURES

- Dense product is made from 17ga galvanized steel wire welded to form 0.7 inch x 1.5 inch openings
- Its design promotes uniform plaster thickness
- A series of flat-bottomed V-shaped furrs ensure a full 3/8" scratch coat
- Additional cold-rolled longitudinal wires form a twin track that simplifies attachment, for greater productivity and job satisfaction
- The cold-rolled technology produces flat wires that reduce curvature memory, for an easy-to-handle roll
- Rolls are more manageable than sheet products and make for easy installation
- Has an ASTM E119 Fireproofing Test for Concrete Applications. Consult with ClarkDietrich.

V TRUSS FOR CEILINGS



Product code	Style	Equal to/Used for	Dimensions	Sheets/ Bundle	Bundles/ Pallet	Weight/ Pallet
VTWC *2.20 lb/sq ² yd.	V Truss Ceilings	3/8" Hi Rib Lath	29" x 98"	12	20	1090 lbs

*Complies to ASTM C933 Welded Wire Lath

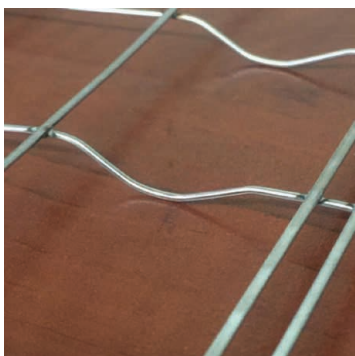
STRONG, SAFE AND EASY TO USE

V Truss for Walls & Ceilings combines a series of 3/8-inch "V" shaped trusses, and heavy perforated draft paper that is sandwiched between the primary sheet and back layer of stiffening wires. The sheets are lightweight, yet strong and easy to cut. Attachment points are identified on the printed kraft paper for ease of installation.

- The lap joints are single mesh at ends and sides
- Single mesh lap joints provide for full keying & embedment
- The product can span 24" o.c. to horizontal framing

STRUCTALATH III

Structalath reduces cracking and increases stucco embedment while being easy to install, enhancing worker satisfaction and productivity. Structalath 316 is a version of our regular Structalath with a reduced furr depth of 3/16" for use in 1-coat systems.



Product code	Style	Equal to/Used for	Width (roll)	Length / Sq. Footage	Weight (roll)
Structalath 3 1.14 lb/sq ² yd.	No. 17 wire, 1-1/2" x 1-1/2"	1.75# dia. / Wood Frame	38-3/8"	150 ft / 470 sq. ft	54 lbs

NOTE: Structalath 3 sold 32 rolls/pallet.

*Structalath-316 is reduced furr for 1-coat (1/2") plaster applications

STRUCTURAL PERFORMANCE

- Structalath provides excellent reinforcing value and crack resistance
- It mobilizes all wires to provide a reinforcing truss
- Welded joints provide structural integrity and superior stiffness
- Square openings at 1-1/2" provide crack-bridging capability
- Furring pattern allows excellent keying in the stucco

PATENTED COLD-ROLLED TECHNOLOGY

- Cold-rolled technology delivers flattened, longitudinal wires, unique to Structalath products, for greater strength
- Flat, longitudinal wires mean that the roll of wires does not 'spring back' when unrolled, for ease of installation and enhanced worker safety
- The cold rolled process increases tensile and breaking load of the wire
- The wires in our product are aligned with the stress direction, resulting in the utilization of the full tensile strength of the wires

EXCELLENT FURRING

- Furr depth of 1/4" provides for uniform stucco embedment
- Each cross wire is securely furred
- Flat-furr design ensures there will be no damage to the vapor barrier
- Tensioning of wire during installation will not flatten out the furr

WORKER-FRIENDLY

- Structalath rolls are easy to handle, reducing the lathers' fatigue and increasing productivity
- Structalath is designed with safety in mind: Structalath has no coil memory and will not spring back on the applicator, reducing the number of cuts for workers
- The easy-to-handle nature of the product means greater worker satisfaction and productivity
- Structalath is designed for ease of application to cover 9'-3" wall heights (common in residential construction)
- Structalath minimizes build-up and thickness at horizontal laps

CELLULOSE REINFORCEMENT

- K-13™ "Hi Build" Application used for wire reinforcement within the insulation

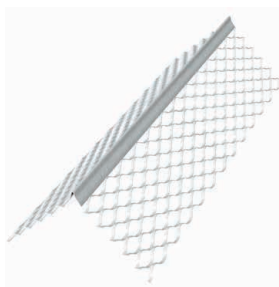
CORNER AND CASING BEADS

Corner and casing beads.

Plaster corner beads and casing beads are specifically designed to enable plaster to key properly, while providing protection at corners, stops and edges.

These components are available as galvanized, solid zinc alloy or vinyl (PVC). Alternate grounds are also available by special order. Contact your local ClarkDietrich representative for details.

#1A EXPANDED FLANGE CORNER BEAD



ClarkDietrich 1A expanded flange corner bead is used to provide strong corner reinforcement for conventional plaster applications. A solid metal nose provides a straight, rigid ground for screeding, and the 2-7/8" or 3" flanges can be flexed easily over irregular, uneven surfaces. Plaster keys near the solid nose provide increased reinforcement where needed and ensure straight corners.

Product code	Size		Pcs./Carton
	Width (in)	Length (ft)	
CBXA (galvanized)	2-7/8	8, 10	30
	3		
CBZA* (zinc)	2-7/8	10	
	3		

*Zinc Alloy recommended for interior high-moisture exposure areas and exterior plaster applications.

#2A REINFORCED CORNER BEAD



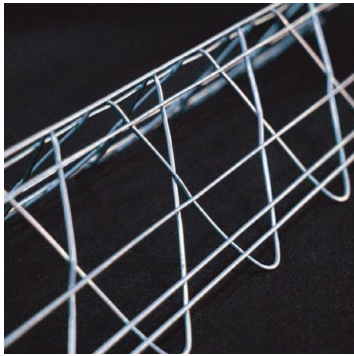
ClarkDietrich #2A galvanized corner bead, provides additional rigidity for reinforcing plaster corners. The #2A is an ideal choice for corners in high-traffic areas. Combination of expanded flanges and pronounced bead nose ensures effective corner alignment and efficient plaster keying from edge to nose.

Product code	Size		Pcs./Carton
	Width (in)	Length (ft)	
CBXX	3-1/4	10	30

V TRUSS CORNERS

These exterior corner accessories are welded right angle assemblies, affording a truer and stronger component that reduces cracking in portland cement plaster or stucco. Seven (7) styles are offered for various application requirements. Wire corners are to be installed below the stucco surface, embedded at least 1/4 below the stucco finish surface.

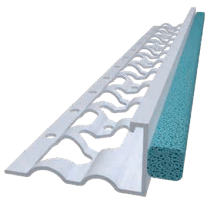
Product code	Size		Pcs./Carton
	Flange (in)	Length (ft)	
49017 V-Truss 3-Coat	2-1/2 x 2-1/2	10	40
49020 V-Truss 1-Coat	2-1/2 x 2-1/2	10	40
49002 V-Truss 3-Coat Bullnose G	2-1/2 x 2-1/2	10	40
49013 3-Coat Arch	2-1/2 x 2-1/2	10	40
49015 3-Coat Bullnose Arch-SC	2-1/2 x 2-1/2	10	40
49016 3-Coat Short Flange-SC	2-1/2 x 1-5/8	10	40
49000 3-Coat Bullnose Short Flange-SC	2-1/2 x 1-5/8	10	40



STRAIGHT AND TRUE CORNER REINFORCEMENT

- Structa V Truss is engineered to provide superior reinforcement for stucco corners
- Its unique 'Truss' design ensures a 'true' straight corner every time
- It provides improved embedment
- The product allows for lots of nailing opportunities
- It's easy to handle, with few sharp ends
- Twin Trac allows for easy attachment and increased rigidity

VINYL BackerBead® WITH E-Flange™



BackerBead combines a casing bead with built-in backer rod. To properly assemble the wall cladding system using stucco or thin-veneer stone, the best approach is to design a "gap" around doors, windows, openings and install a backer-rod with compatible sealant. BackerBead helps the installer create the "gap" on the wall without aligning it in the field. E-Flange design improves stucco embedment by 80% over conventional flanges.

Product code	Ground (in)	Size		Pcs./Carton
		Dimensions	Length (ft)	
6658EFBB	5/8	1-3/4" flange width perforated flange	10	50
6675EFBB	3/4			50
6678EFBB	7/8			50
66100TEFBB	1			50
66125EFBB	1-1/4			50
66150EFBB	1-1/2			40
66175EFBB	1-3/4			40
66200EFBB	2			40

U.S. Patent Nos. D842,496 and D843,015
Made in white or standard colors TAN, BROWN, GRAY or BLACK.



Backer Rod is blue or optional white.
Contact ClarkDietrich for pricing and availability.

VINYL CORNER BEADS

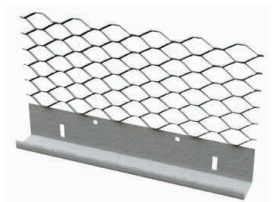


ClarkDietrich corner beads are used to provide strong corner reinforcement for conventional plaster applications. They provide hard to damage, rust-proof straight corners, easily curved for smooth arches. The solid PVC nose provides a straight, rigid ground for screeding.

Product code	Ground	Dimensions	Pcs./Carton
#1 (7', 8', 9', 10')	Any	2-1/2" x 2-1/2", perforated flanges	50
#2 (8', 10')		2-3/4" x 2-3/4", perforated flanges	40
#40		4-1/4" x 4-1/4", perforated flanges	25

NOTE: Other variations found at clarkdietrich.com.

#66 EXPANDED FLANGE CASING BEAD

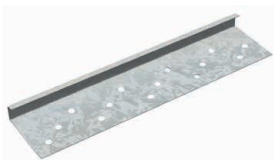


ClarkDietrich #66 expanded flange casing beads are used as a plaster stop, an exposed trim around wall openings, and at junctions or intersections of plaster and other wall or ceiling finishes. Extra-long expanded flange for tie-on applications. Short 90° return flange at plaster surface ensures a neat finish.

Product code	Size			Pcs./Carton
	Grounds (in)	Length (ft)	Weep hole	
XXCB (galvanized)	3/8	10	Optional (Order)	30
	1/2			
	5/8			
	3/4			
	7/8			
	1			
XXZB* (zinc)	1-1/4	10	Optional (Order)	30
	3/8			
	1/2			
	5/8			
	3/4			
	7/8			
1				
1-1/4				

*Zinc Alloy recommended for interior high-moisture exposure areas and exterior plaster applications.

#66 N SHORT FLANGE CASING BEAD



ClarkDietrich #66 N short flange casing beads are used as plaster stops, as exposed trim around wall openings and junctions, or at intersections of plaster and other wall or ceiling finishes. Perforated 1-1/4" nailing flange aids attachment and plaster keying. When used in conjunction with lath, the 66N is installed under the lath.

Product code	Size			Pcs./Carton
	Grounds (in)	Length (ft)	Weep hole	
SFCB (galvanized)	3/8	10	No	30
	1/2			
	5/8			
	3/4			
	7/8			
	1			
SFZB (zinc)	1-1/4	10	No	30
	3/8			
	1/2			
	3/4			
7/8				

VINYL CASING BEADS



ClarkDietrich casing beads are used to terminate stucco & stone against doors, windows and dissimilar surfaces. Casing beads should not be used in lieu of Foundation Weep Screeds at the base of the wall, as they do not meet building code requirements. Weep holes can be added at plant. Inquire about lead time.

Product code	Size		Pcs./Carton
	Grounds (in)	Dimensions	
6625	1/4	1-3/4" flange width perforated flange	100
6638	3/8		100
6650	1/2		100
6658	5/8		100
6675	3/4		75
6678	7/8		75
66100	1		75

Made in white or standard colors TAN, BROWN, GRAY or BLACK.



Contact ClarkDietrich for pricing and availability.
More sizes and styles found at clarkdietrich.com.

CONTROL AND EXPANSION JOINTS

Control joints and expansion joints.

Control and Expansion Joints are designed to relieve stress and minimize cracking, especially on surface areas of 144 square feet or more, per ASTM C1063, Section 7.11.4.1.

Control Joints are a **one-piece** component applied at points of anticipated stress, and Expansion Joints are **two-piece** joints attached on either side of substrate at points of natural structural variation. Manufactured in galvanized, zinc alloy, and vinyl (PVC) for various applications.

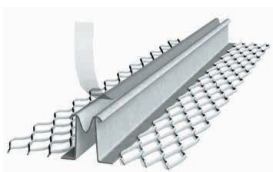
DOUBLE-V CONTROL JOINT #15



Double-V, sometimes called M-Type control joints, relieve the stresses of basic expansion and contraction associated with inherent shrinkage during stucco curing and general thermal changes. Resists corrosion, plus expanded flanges allow for proper keying and easy installation. Ground heights include 3/8" for thin coat plaster and 1/2", 3/4" and 7/8" for conventional plaster.

Product code	Size		Pcs./Carton
	Grounds (in)	Length (ft)	
VVCJ (galvanized)	3/8	10	24
	1/2		
	3/4		
	7/8		
VVJZ (zinc)	1/2	10	
	3/4		
	7/8		

DOUBLE-J CONTROL JOINT #XJ15



A general-purpose control joint offering exceptional expansion control for plastered walls and ceilings, the double-J expansion control joint has a 5/16" reveal and rolled outer edges that allow effective plaster bonding. This helps prevent visible separation cracks. The applied plastic tape keeps the reveal clean and is removed easily after finish application.

Product code	Size		Pcs./Carton
	Grounds (in)	Length (ft)	
XJ15 (galvanized)	1/2	10	24
	3/4		
	7/8		
ZJ15 (zinc)	1/2	10	
	3/4		
	7/8		

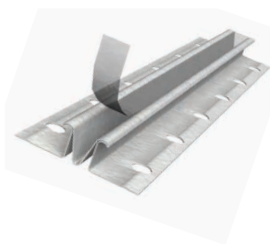
#30 Corner Master™ INSIDE CONTROL JOINT



ClarkDietrich #30 Corner Master™ inside corner control joint is designed to provide stress relief at plaster wall inside corner intersections, by absorbing movement and controlling cracking. It has expanded flanges pre-formed at 90° for a flush fit at inside corners. Ground heights offered aid plaster keying and result in a clean, straight finish. Manufactured from galvanized steel for corrosion protection.

Product code	Size		Pcs./Carton
	Grounds (in)	Length (ft)	
CR30	1/2	10	24
	3/4		
	7/8		

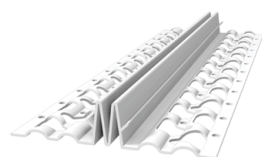
ZINC CONTROL JOINTS 38, 50 AND 75



Zinc control joints 38, 50 and 75 are roll-formed from zinc to resist corrosion in both interior and exterior applications with gypsum or Portland cement plaster. An open slot, 1/4" wide and 1/2" deep, is protected with plastic tape that is removed after plaster and finish are completed. Perforated short flanges aid keying and wire attachment to metal lath.

Product code	Size		Pcs./Carton
	Grounds (in)	Length (ft)	
ZCJ3	3/8	10	25
ZCJ5	1/2		
ZCJ7	3/4		

VINYL E-FLANGE™ CONTROL JOINT



Designed to relieve stress and assist in controlling cracking in large areas of walls and ceilings. Specially designed connector clips are provided for alignment and base for sealants. Patented E-Flange design improves stucco embedment by 80% over conventional flanges.

Product code	Size			Pcs./Carton
	Grounds (in)	Flange Width (in)	Length (ft)	
1558EF	5/8	1-3/4	10	30
1575EF	3/4			26
1578EF	7/8			20
15100EF	1			20

U.S. Patent Nos. D842,497

Made in white or standard colors TAN, BROWN, GRAY or BLACK.



Contact ClarkDietrich for pricing and availability.

VINYL XJ CONTROL JOINTS with removable tape



Provides stress relief and assists in controlling cracking in large areas of walls and ceilings. Removable tape protects deep "V" expansion slot during construction. Specially designed Connector Clips are provided for alignment and base for sealants.

Product code	Size		Pcs./Carton
	Grounds (in)	Dimensions	
1525X	1/4	3-1/4" flange width, perforated flange, removable tape	50
1538X	3/8		50
1550X	1/2		40
1558X	5/8		35
1575X	3/4		30
1578X	7/8		30
15100X	1		30

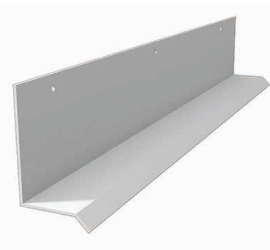
NOTE: Connector Clips are not provided 1/4" or 3/8" grounds. Recommended for smooth finishes. Positive attachment of each flange of Control Joint to separate framing is required.

Made in white or standard colors TAN, BROWN, GRAY or BLACK.



Contact ClarkDietrich for pricing and availability.

VINYL DRIP FLASHING - 2" FLANGE



Designed to be used above window and door openings or at the floor line to assist with moving moisture away from the wall. May be used in combination with casing bead. Always caulk all intersections, butt joints, ends and corners at time of installation.

Drip flashing also produced in vertical flange heights of 2-1/2", 3" and 3-1/2" tall.

Product code	Size				Pcs./Carton
	Ground	Vertical Flange	Drip Edge	Length (ft)	
DCB50-25	1/2	2	1/4	10	50
DCB58-25	5/8				
DCB75-25	3/4				
DCB78-25	7/8				
DCB100-25	1				
DCB150-25	1-1/2				
DCB200-25	2				30
DCB300-25	3				
DCB400-25	4				

Made in white or standard colors TAN, BROWN, GRAY or BLACK.



Contact ClarkDietrich for pricing and availability.

#40 TWO-PIECE EXPANSION JOINT



ClarkDietrich expansion joint #40 is a two-piece slip joint that finishes butt ends of adjacent panels in wide or tall walls and ceilings, to allow for multi-directional movement. Ideal for joining dissimilar wall types such as wood framing to CMU and at construction joints. Use where excessive horizontal and vertical movement may occur. Adjustable expansion opening or reveal is 1/4" to 5/8".

Product code	Size		Pcs./Carton
	Grounds (in)	Length (ft)	
EJ40 (galvanized)	1/2	10	25
	3/4		
	7/8		
EZ40* (zinc)	1/2	10	25
	3/4		
	7/8		

*Recommend zinc alloy in high humidity or coastal environments.

VINYL EXPANSION JOINTS (SLIP JOINT)



Designed to relieve stress in wall and ceiling areas where excessive horizontal and vertical movements might occur. Includes an additional design feature of a reveal.

Product code	Ground (in)	Size	Pcs./Carton
		Dimensions	
4038-50	3/8	1/2" reveal, (adj. 1/4" - 5/8") 4" to 4-3/8" overall width, perforated flanges	25
4050-50	1/2		25
4058-50	5/8		25
4075-50	3/4		25
4078-50	7/8		20
40100-50	1		20
4038-100	3/8	1" reveal, (adj. 3/4" to 1-1/8") 4-1/2" to 4-7/8" overall width, perforated flanges	20
4050-100	1/2		20
4058-100	5/8		20
4075-100	3/4		20
4078-100	7/8		15
40100-100	1		15
4038-150	3/8	1-1/2" reveal, (adj. 1-1/4" - 1-5/8") 5" to 5-3/8" overall width, perforated flanges	15
4050-150	1/2		15
4058-150	5/8		15
4075-150	3/4		15
4078-150	7/8		12
40100-150	1		10

Made in white or standard colors TAN, BROWN, GRAY or BLACK.



Contact ClarkDietrich for pricing and availability.

VINYL WIDE EXPANSION JOINTS (SLIP JOINT)



Designed to relieve stress in wall and ceiling areas, where excessive horizontal and vertical movements might occur. Includes an additional design feature of a reveal.

Product code	Ground (in)	Size	Pcs./Carton
		Dimensions	
5038-50	3/8	1/2" reveal, (adj. 1/4" - 5/8") 6" to 6-3/8" overall width, perforated flanges	18
5050-50	1/2		18
5058-50	5/8		18
5075-50	3/4		18
5078-50	7/8		15
50100-50	1		15
5038-100	3/8	1" reveal, (adj. 3/4" to 1-1/8") 6-1/2" to 6-7/8" overall width, perforated flanges	15
5050-100	1/2		15
5058-100	5/8		15
5075-100	3/4		15
5078-100	7/8		12
50100-100	1		12
5038-150	3/8	1-1/2" reveal, (adj. 1-1/4" - 1-5/8") 7" to 7-3/8" overall width, perforated flanges	12
5050-150	1/2		12
5058-150	5/8		12
5075-150	3/4		12
5078-150	7/8		10
50100-150	1		10

Made in white or standard colors TAN, BROWN, GRAY or BLACK.



Contact ClarkDietrich for pricing and availability.

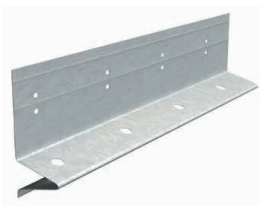
WEEP AND SILL SCREEDS

Weep and sill screeds.

Weep and sill screed products are designed especially for use in exterior stucco or thin stone applications to establish a stop line at the base of the wall.

Punched holes in the sloped ground provides a mechanical plaster bond and reduces separation at the nose of the ground. The slope designed into the ground facilitates moisture migration. The screeds are produced to specifications found in ASTM C1063 for stucco and ASTM C1780 for Thin Stone.

FHA-7 FOUNDATION WEEP SCREED



FHA-7 foundation weep screed protects the stop edges of stucco and stone at the sill plate. Commonly referred to as FHA screed, it meets pertinent IBC/IRC requirements as part of a drainage system for exterior stucco and stone applications.

Product code	Size			Pcs./Bundle
	Grounds (in)	Depth (in)	Length (ft)	
FHA7	1/2	3-1/2	10	10
	5/8*			
	3/4*			
	7/8*			
	1-3/8			

*Available in zinc alloy for 5/8", 3/4" and 7/8" grounds. Special order weep screeds without holes in the ground.

#36 SILL SCREED



7/8" sill screed is a similar profile to the FHA7 foundation weep screed except the bottom flange has been cut back to allow trowel access for cleaning excess material and trimming of the vapor barrier. It offers impact and splash protection, and works well from roof-to-wall transitions.

Product code	Size			Pcs./Bundle
	Grounds (in)	Depth (in)	Length (ft)	
SI36	7/8	5-1/2	10	10

3-1/2" VINYL WEEP SCREEDS



Designed to relieve moisture from stucco/stone and act as a stop. Install on frame construction where stucco/stone and foundation walls meet. Shown here is standard weep screed.

Product code	Size		Pcs./Carton
	Grounds (in)	Dimensions	
WS38-350U	3/8	3-1/2" attachment flange, 4" overall width solid flange	50
WS50-350U	1/2		50
WS58-350U	5/8		40
WS75-350U	3/4		40
WS78-350U	7/8		30
WS138-350U	1-3/8		30

NOTE: Other variations of the vinyl weep screed can be found at clarkdietrich.com.

Made in white or standard colors TAN, BROWN, GRAY or BLACK.



Contact ClarkDietrich for pricing and availability.

VINYL FOUNDATION WEEP SCREEDS with extended leg



The extended leg design of this vinyl accessory allows the installer to accommodate off-set sill plate, that's not in alignment with the metal of wood framing attached above. A standard weep screed would leave a gap but the extended leg design closes that gap, thereby meeting code requirements.

Product code	Size		Pcs./Bundle
	Grounds (in)	Dimensions	
WSL50-350U	1/2	3-1/2" overall width, unperforated flange, 1/2" back leg	50
WSL58-350U	5/8		40
WSL78-350U	7/8		40
WSL138-350U	1-3/8		30

Made in white or standard colors TAN, BROWN, GRAY or BLACK.



Contact ClarkDietrich for pricing and availability.

#1 J-WEEP WITH 2" NAILING FLANGE AND WEEP HOLE



1-3/8" J-weep low-back is commonly used as a stop around door and window openings or in areas where stucco or EIFS terminations abut dissimilar wall types. Nail, screw or staple-attach to the frame or sheathing, then foam insulation, cement board or metal lath can be installed over it. The protruding ridge of the metal must extend beyond the plane of overlaid materials.

Product code	Size			*Weep hole	Pcs./Bundle
	Grounds (in)	Flange Height (in)	Length (ft)		
JCLB	1-3/8	2	10	No	10
JWLB	1-3/8	2	10	Yes	10

NOTE: Should only be used on approved one-coat or insulated stucco systems. Weep holes 3/8" at 3.5" spacing along the ground.

3-1/2" J-WEEP HIGH-BACK PLASTER STOP



J-weep high-back plaster stop is a J-shaped square-nosed trim manufactured from 26 gauge galvanized steel. Punched weep holes allow for use as a sill weep screed or screed and trim around wall openings. Squared bends accommodate 1" rigid insulation and 3/8" one-coat stucco applications.

Product code	Size			*Weep hole	Pcs./Bundle
	Grounds (in)	Depth (in)	Length (ft)		
JWP	3/8	3-1/2	10	Yes	10
	7/8	3-1/2	10		
	1-3/8	3-1/2	10		

NOTE: Weep holes 3/8" at 3.5" spacing along the ground.

CI WEEP TRACK



Designed to be used with #1 Corner Bead around windows and doors and at the foundation line to direct water drainage. Continuously insulated (CI) stucco assemblies with CI Weep Track have achieved the requirements of NFPA 285.

Product code	Insulation Thickness	Back Flange (in)	Weep Trough (in)	Perforated Flange (in)	Pcs./Carton
CIWT-350	1" - 3"	3-1/2"	3/8"	1-1/4"	30

US Patent Number D656,603

Made in white or standard colors TAN, BROWN, GRAY or BLACK.



Contact ClarkDietrich for pricing and availability.

OVERVIEW

ClarkDietrich®

Today, ClarkDietrich is not only a company of size and scope—but one of much broader vision. Beyond the strength of our steel framing products, we find that real integrity is found in working with you as a confident partner who delivers unmatched insight and remarkable perspective.

No longer just studs, tracks and headers. We are becoming a leader in lathing systems and accessories. We see what the future for walls holds, and we are acting on it with products that perform as a system, backed by intelligent design tools and fully capable engineering services. **See our full product line at clarkdietrich.com/lath.**

Regardless of your project's size or complexity, ClarkDietrich is able to listen, consult and deliver on all your projects. **And we can do it coast to coast.**

Vinyl Corp.™ is now ClarkDietrich Vinyl Products.

From the very beginning, we have strived to make the finest wall and ceiling accessories and create the best customer experience environment in the business. From the materials we use to make our products, to the over 1,000 vinyl wall and ceiling accessories we offer, we have listened to building professionals across the walls and ceilings industry spectrum to meet all their accessory needs. See all that we have to offer at clarkdietrich.com. Please see website for technical data at clarkdietrich.com. Now offering vinyl products in tan, brown, gray and black as standard color options.

GENERAL NOTES

General Notes

Metal lath products should not be used with magnesium oxychloride cement stuccos or stuccos containing calcium chloride additives. In ceiling assemblies, certain precautions concerning construction, insulation and ventilation are necessary for good performance.

Asphalt paper-backed lath is available for various applications requiring a moisture barrier. Paper conforms to Federal Specification UU-B-790A; type Grade D, style 2 and type 1, grade B, style 1a. 60-Minute Grade D, APB passes 60 minutes of water resistance under ASTM D779 - Standard Test Method for Determining the Water Vapor Resistance of Sheet Materials. In some areas, E-Screen Rainscreen may be substituted for 1 layer of WRB. Check with local codes.

Joints and corners are a potential point of water intrusion. ClarkDietrich strongly recommends a weather-resistant barrier be placed as flashing behind all joints and corners. Also, high-performance caulking should be applied under and between the joints prior to the attachment of the materials. Rainscreen Drainage Mats can contribute to improved wall ventilation and drainage.

Suggestions for installation precautions when installing two-piece expansion joints and double casing beads used as double expansion joints—ASTM C1063 requires that double casing beads used as a movement joint are installed "with a flexible barrier membrane behind the casing beads." It is ClarkDietrich's opinion that all two-piece joints, whether made from double casing beads or as a manufactured two-piece joint, should be installed with the flexible peel and stick membrane behind the joint. It is further recommended that they be filled with backer rod and a highly elastic top-quality sealant.

Vinyl EIFS/DEFS Accessories

All ClarkDietrich EIFS/DEFS accessories are produced to ASTM D1784 and D4216 - cell class 13244C. The EIFS PB/DEFS family of products include all starter tracks, drip edge screeds, control joints, soffit vents, L-stop beads, sill wedges, channel reveals. Please view all these products at www.clarkdietrich.com.

Vinyl Accessories For Thin Veneer Stone

ClarkDietrich has developed a new Stone Veneer Catalog comprising of components such as casing beads, weep screeds, drip flashing that are used specifically with thin veneer stone. Vinyl accessories for thin stone meet ASTM C1780 - Standard Practice for Installation Methods for Adhered Manufactured Stone Masonry Veneer. All vinyl accessories are made in white, with options for tan, brown, gray or black. Visit clarkdietrich.com for new catalogs for Thin Veneer Stone and Stucco applications.

APPLICATION STANDARDS

Industry application standards

ClarkDietrich metal plaster bases (lath) and accessory products are manufactured in compliance with the International Code Council IBC and IRC, ASTM C1780 – Installation of Thin Veneer Stone Systems, MVMA - Installation Guide and Detailing Options.

Metal lath meets ASTM C847, ASTM C841, ASTM C1063. (1) corner beads, casing beads, base bead and expansion & control joints meet ASTM C841 (interior) and ASTM C1063 (exterior). (2) Cornerite meets ASTM C841. Cold-rolled channel meets ASTM C841. (2) Wire meets ASTM A641.

Rainscreen: E-Screen™ produced to ASTM E2925- Standard Specification for Manufactured Polymeric Drainage and Ventilation Materials Used to Provide a Rainscreen Function

Footnotes: (1) All galvanized products produced from steel, to ASTM A653, galvanized before forming. (2) Zinc Alloy accessories are recommended on exterior applications. (3) Zinc Accessories are produced to ASTM B69 and are recommended for wet and/or exterior applications.

Definitions: ASTM = American Society for Testing and Materials, MVMA = Masonry Veneer Manufacturer's Association

ClarkDietrich assumes no liability expressed or implied as to the engineering, architecture or workmanship of any project. It is the responsibility of the contractor and design professional to recommend and select product types and installation instructions as set forth in ASTM C1063 for design and placement of lath and plaster accessories. Thin veneer stone is governed by ASTM C1780 Installation Standard.

Welded Wire by Structa Wire Corp. is produced to ASTM C933 - Welded Wire Lath Standard.

Types and Weights of Metal Plaster Bases and Corresponding Maximum Permissible Spacing of Wall & Ceiling Framing Members or Furring

Type of Metal Plaster Base	Minimum weight of Metal Plaster Base lb/yd ² (kg/m ²)	Specific Installation Requirements and Maximum Permissible Spacing of Wall and Ceiling Framing Members or Furring, Center to Center, in. (mm)				
		Walls		Ceilings		
		24 (610)	16 (406)	24 (610)	16 (406)	12 (305)
Expanded Sheet Metal	2.5 (1.4)	Permitted only for self-furred lath on sheathed wall framing members or solid wall bases	Permitted	Not Permitted	Permitted	
	3.4 (1.8)					
Flat Rib	2.75 (1.5)	Not Permitted	Permitted only for unsheathed wall framing members	Not Permitted		
3/8" Rib lath	3.4 (1.8)	Not Permitted		Permitted		
	4.0 (2.1)	Not Permitted		Permitted		
Welded Wire	1.14 (0.618)	Not Permitted	Permitted	Not Permitted		
	1.95 (1.058)	Permitted		Permitted		
Woven Wire	1.4 (0.76)	Permitted only for wood wall framing members, wood furring	Permitted	Permitted only for wood and concrete ceiling framing members		
				Not Permitted	Permitted only for steel ceiling framing members	

Spans may be increased to 24" o.c. with self-furred metal lath over solid sheathing assemblies approved for this use. 2. Metal lath used as reinforcement for plaster shall be furred away from vertical supports at least 1/4". Self-furred lath meets furring requirements. EXCEPTION: Furring of expanded metal lath is not required on supports having a bearing surface width of 1-5/8" or less.

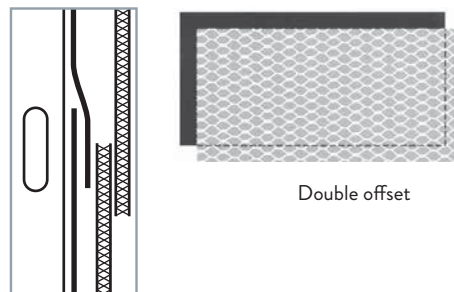
Application of WRB-backed lath

The paper backing is moisture resistant to temporarily protect the stud cavity and sheathing from moisture intrusion. To assure that the barrier functions as designed:

- A. Lap the vertical and horizontal lap joints with paper on paper and metal on metal.
- B. Lap paper with the upper layer lapped over the lower layer, shedding moisture to the outside.

Subsequent layers should be installed so that the paper laps in a shingle-like manner. Follow sequence until the entire surface is completed.

In some areas, E-Screen 6mm Rainscreen may be substituted for 1 layer of WRB. Check with local codes.



TRADEMARKS

Trademarks

ClarkDietrich® is a registered trademark of ClarkDietrich Building Systems.

SubmittalPro®, Cornerite™, Corner Master™, Mini-Bead™, E-Flange™ and BackerBead® are owned by ClarkDietrich.

LEED® is a registered trademark of the U.S. Green Building Council.

UL® and UL Design® are trademarks of Underwriters Laboratories, Inc.

Structalath®, Twin Trac®, V Truss® and Mega Lath™ are registered trademarks of Structa Wire Corp.

WARRANTY

Warranty

Our products are manufactured in accordance with company standards and/or industry standards, as applicable. All ClarkDietrich products are covered by our standard warranty which is contained in our Standard Terms and Conditions of Sale and which will be provided upon request. Generally, we warrant our products will be free from defects in material and workmanship at the time of shipment, subject to the limitations stated in the warranty. Unless specifically agreed in writing by us with respect to specific orders, we do not make any warranty of merchantability or fitness for a particular purpose. The buyer is responsible to assure that buyer orders the appropriate product for any applicable code or specification requirements.

NOTICE: Our liability is expressly limited to replacement of defective products. We shall not be liable for incidental and consequential damages, nor for any loss caused by misuse or misapplication of our products. Any claim shall be deemed waived unless made in writing to us within thirty (30) days from the date it was or reasonably should have been discovered.

EASY EMBEDMENT SYSTEM™ (EES)

STRUCTA WIRE LATH & E-FLANGE™ ACCESSORIES FOR SUPERIOR STUCCO PERFORMANCE

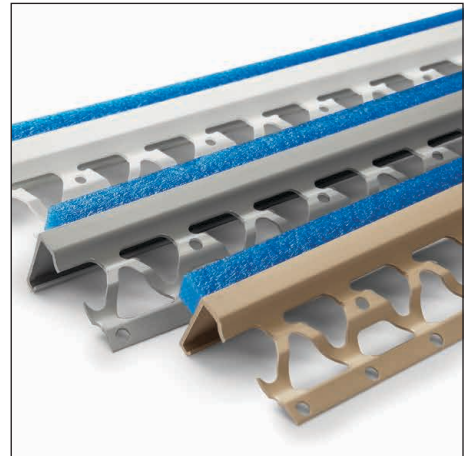
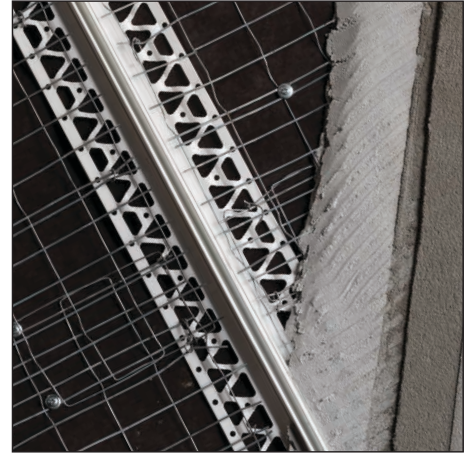
The most important part of the plastering application is the scratch-coat. It provides the ideal foundation for lath embedment resulting in durable, long-lasting stucco cladding. With Structa Wire and E-Flange™ Casing Beads and Control Joints, the lath is embedded easily and thoroughly.

E-FLANGE CONTROL JOINTS AND CASING BEADS

The open design of this new profile allows for plaster to flow more easily into the flanges, improving embedment by 80%. BackerBead® Casing Beads also come with a built-in backer rod which provides superior quality in gap control, caulking depth, and coverage.

STRUCTA WIRE LATH

The welded wire lath comes in rolls, not sheets, which are rolled out continuously across the wall with not vertical seams and no stapling or wire tying required on the horizontal laps. Simply roll Structa Wire over door and window openings and cut the wires away.



CODE APPROVALS AND PERFORMANCE STANDARDS

ClarkDietrich products meet or exceed these applicable performance standards.

ASTM American Society for Testing and Materials

Product specifications

ASTM C847	Metal Lath
ASTM C841/C1063	Veneer and plaster accessories
ASTM C1047	Beads and trims—metal—paper—vinyl
ASTM C933	Specification for welded wire lath

Material specifications

ASTM A1003 (NS33, ST33L, ST33H, ST50L, ST50H)	
ASTM A653	Zinc-coated hot-dip process
ASTM A653/B69	Veneer and plaster accessories/standard spec for zinc strip

Protective coating standards

ASTM A653	Zinc-coated hot-dip process
ASTM C1063	Veneer and plaster accessories
ASTM C1047	Beads and trims—metal—paper—vinyl

Installation standards

ASTM C1063	Installation of metal plaster base systems
ASTM C1780	Installation of adhered manufactured stone veneer

UL® Underwriters Laboratories testing standard

UL 263 "Fire Tests of Building Construction and Materials"

Additional code approvals

International Building Code (IBC), International Residential Code (IRC)

All ClarkDietrich Laths are 3rd Party Tested per ICC's AC-191 by Intertek, File CCRR-0204 and available on the ClarkDietrich website under Support Tools.



Scan for the most up-to-date ClarkDietrich literature.

LEED® Services

BUILD GREEN with ClarkDietrich

ClarkDietrich is an active member of the U.S. Green Building Council and is committed to supplying quality products that are environmentally responsible. We are continually working to develop greener building products and sustainable business practices. ClarkDietrich steel framing helps contribute points toward LEED® certification. For more details contact Technical Services at 888-437-3244 or visit www.clarkdietrich.com/LEED.

ClarkDietrich has prepared this literature with the utmost diligence and care for accuracy and conformance to standards.

ClarkDietrich intends this information to be accurate, informative, and helpful as a selection guide for choosing ClarkDietrich products. However, this information is only to be used for guidance and is not intended to replace the design, drawings, specifications, and decisions of a professional architect or engineer.

ClarkDietrich or its affiliates shall not be responsible for incidental or consequential damages, directly or indirectly sustained, nor for loss caused by application of our products for other than their intended uses. Our liability is limited to replacement of defective products. Claims shall be deemed waived unless they are made to us in writing within thirty (30) days of the date a problem was or reasonably should have been discovered.

ClarkDietrich reserves the right to modify or change any information contained in this literature without notification.



USGBC and related logo is a trademark owned by the U.S. Green Building Council and is used by permission.

LOCATIONS

ClarkDietrich Manufacturing and Sales Locations:

CALIFORNIA Riverside P 951.360.3500	CALIFORNIA Sacramento P 951.360.3500	CONNECTICUT Bristol P 866.921.0023	FLORIDA Dade City P 352.518.4400
FLORIDA Miami P 305.477.6464	GEORGIA McDonough P 678.304.5500	ILLINOIS Rochelle P 800.659.0745	MARYLAND Baltimore P 410.477.4000
MISSOURI O'Fallon P 636.300.1411	OHIO Warren-East P 330.372.5564	OHIO Vienna P 330.372.4014	TEXAS Dallas P 214.350.1716
TEXAS Pasadena P 281.383.1617	CLIP EXPRESSSM P 866.638.1908 Dallas McDonough Warren Sacramento		

ClarkDietrich Engineering Services. A full spectrum of solutions.

Toll-Free Phone: 877.832.3206
Toll-Free Fax: 877.832.3208
Technical Services: 888.437.3244
Email: engineering@clarkdietrich.com

CENTRAL Merrillville, IN
SOUTHEAST McDonough, GA
NORTHEAST Bristol, CT
WEST Carlsbad, CA

Revision Log:

9/13/2023 - Page 16 Updated Vinyl Expansion charts

Turn to ClarkDietrich for a complete lineup of steel construction products and services nationwide:

Interior Framing · Exterior Framing · Interior Finishing · Exterior Finishing · Clips/Connectors · Engineering



9050 Centre Pointe Dr. Suite 400
West Chester, OH 45069

P 513.870.1100
F 513.870.1300

clarkdietrich.com
Clarkwestern Dietrich Building Systems LLC